

HVPS R-1800

Remote High Voltage Power Supply Instruction Manual

www.modionvacuum.com

- For Further Support Please call or email
- 724.523.9610
- support@modionvacuum.com
- 115 Railroad Street
Irwin, PA 15642

HVPS R-1800

The HVPS R-1800 is a High Voltage Power Supply/ Controller designed to run MODION® ion pumps. Please be sure to read and understand all instructions prior to installation and use.

Package Contents:

- 1 HVPS R-1800 High Voltage Power Supply/controller

Sold Separately

- Cable and Connector

Table of Contents:

Overview/Package Contents	1
Specifications	2
Operating Instructions	3
Monitor Vs. Pressure	4
Dimensions & LED Display Operation	5
HVPS R-1800 Mounting Dimensions	6
Input/Output Pin Connections	7
Warranty Info	8



HVPS R-1800



Specifications

Input

Voltage: 12Vdc

Current: 800mA max

Output

Voltage: 3500Vdc positive nominal

Current: 1mA max

OPERATING INSTRUCTIONS

Connecting Pump

1. Connect the pump side of cable connector to the ion pump.
2. Connect the controller side of the cable to the HVPS R-1800.
3. Connect the safety interlock cable to the HVPS R-1800.
4. Check to make sure the entire system is grounded prior to introducing power.
5. Connect wall adapter power cable to HVPS R-1800
6. Plug in wall adapter to operate.

Disconnecting Pump

1. When disconnecting pump, disconnect power to HVPS R-1800 prior to removing any other cable.
 2. Wait thirty (30) seconds before disconnecting cable. Failure to wait 30 seconds may result in shock due to capacitors not being fully discharged.
-

Figure 1
MONITOR VS. OUTPUT CURRENT

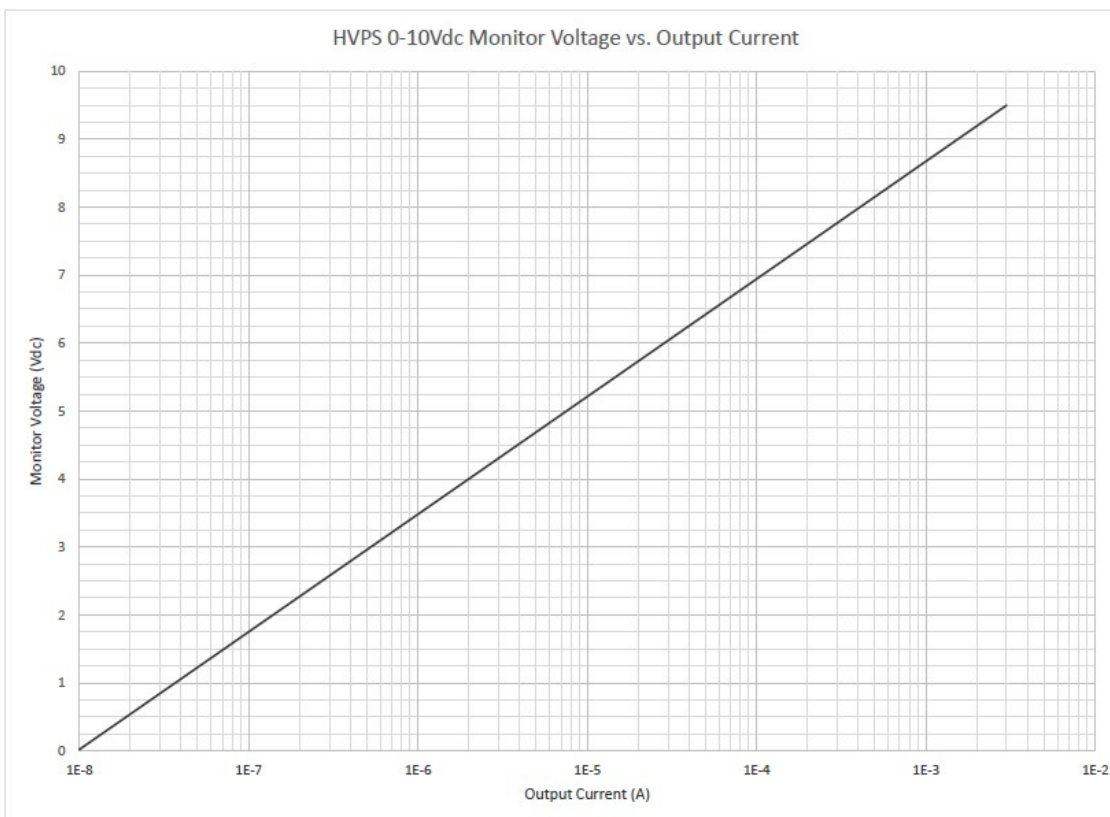
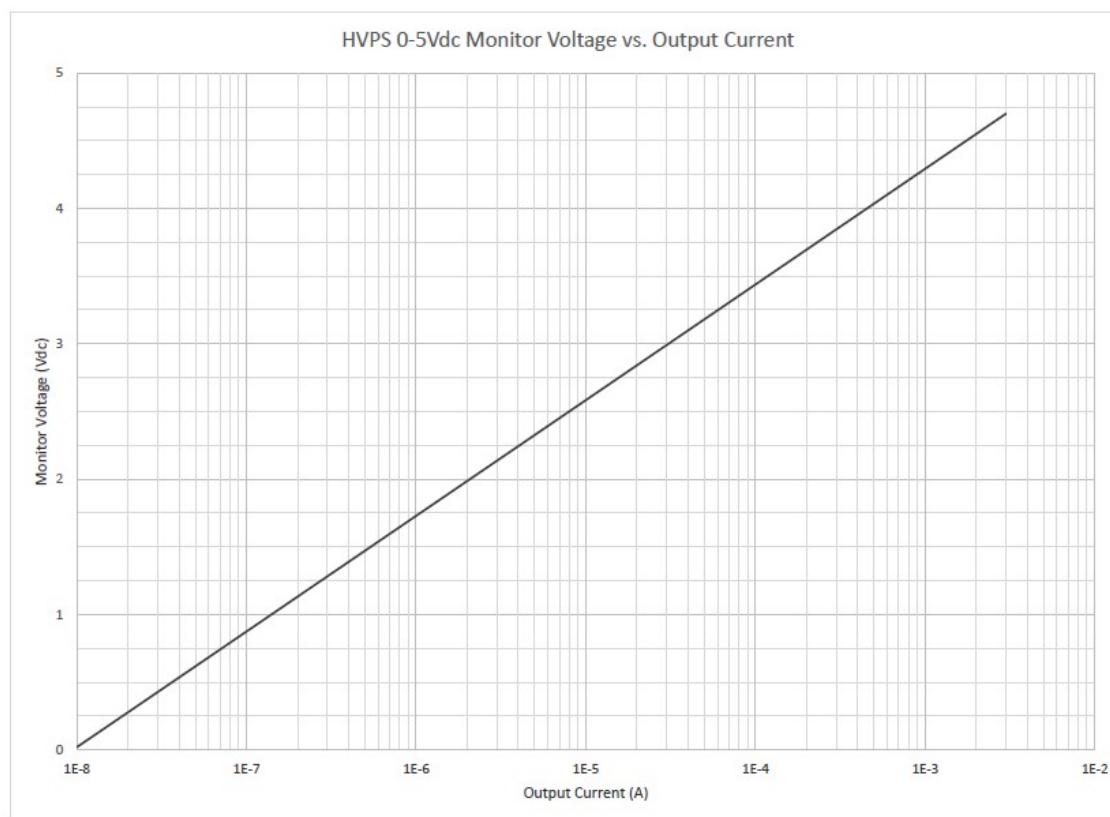


Figure 2
R-1800 HVPS DIMENSIONS & LED OPERATION

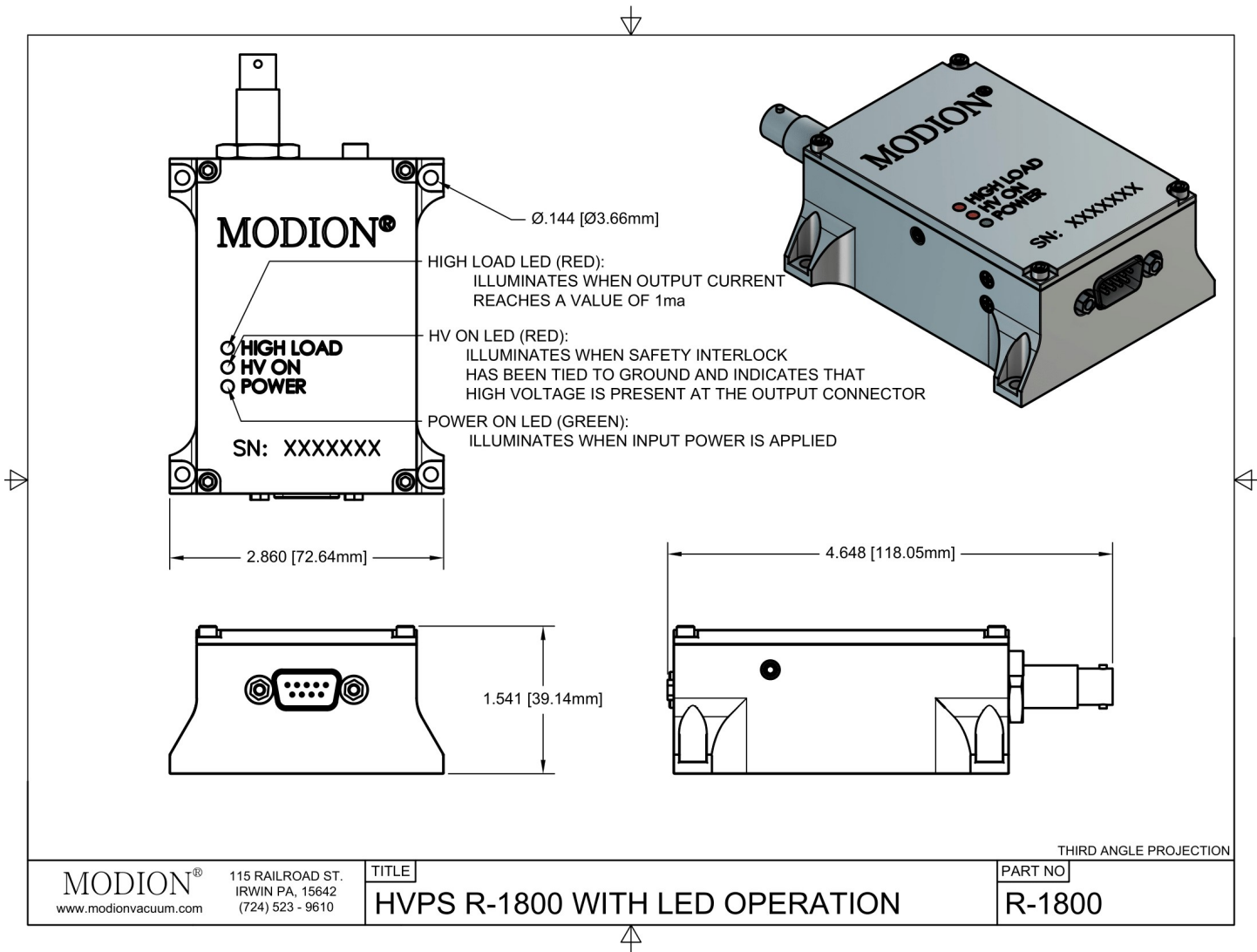


Figure 3
R-1800 HVPS MOUNTING DIMENSIONS

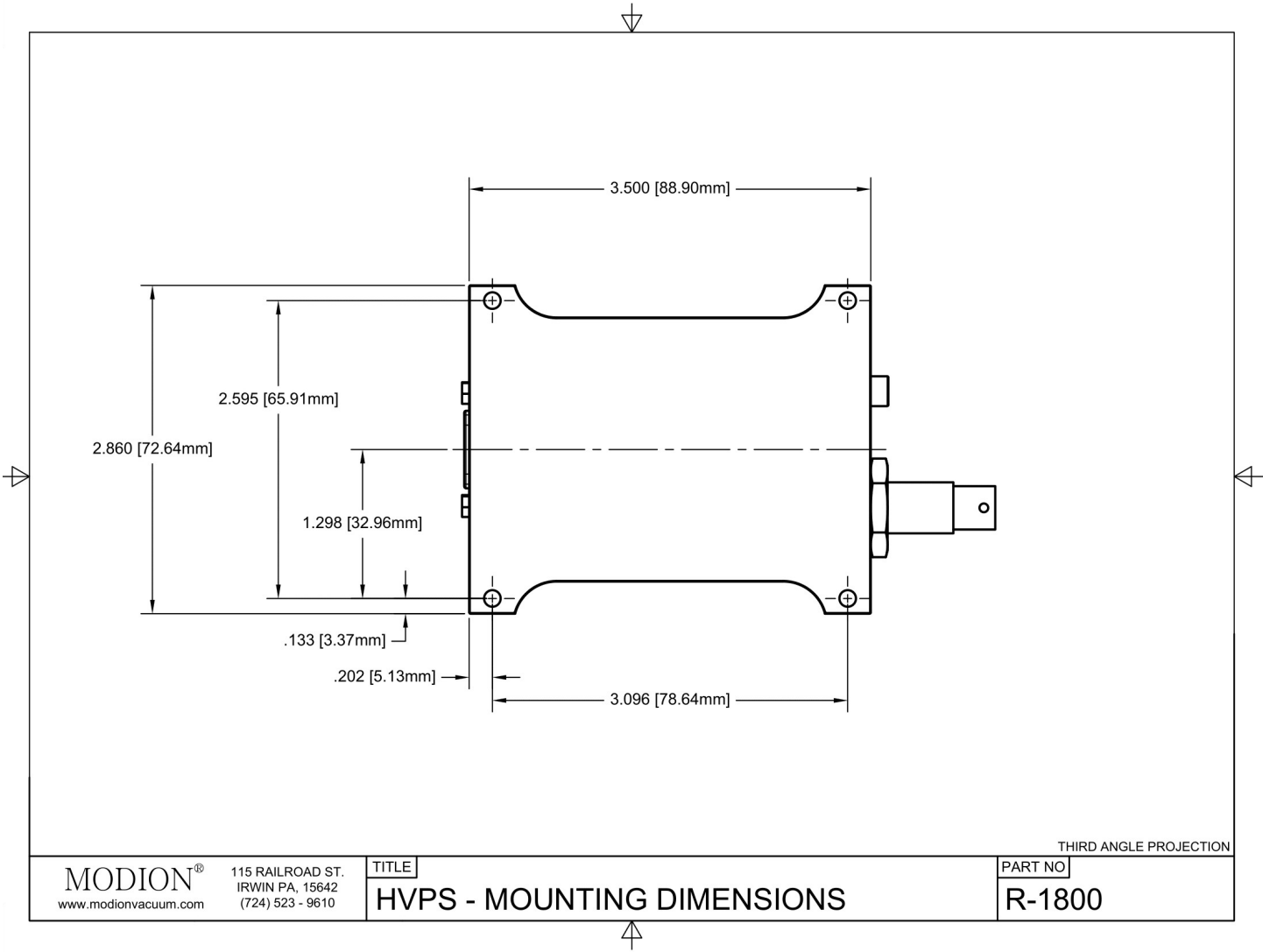
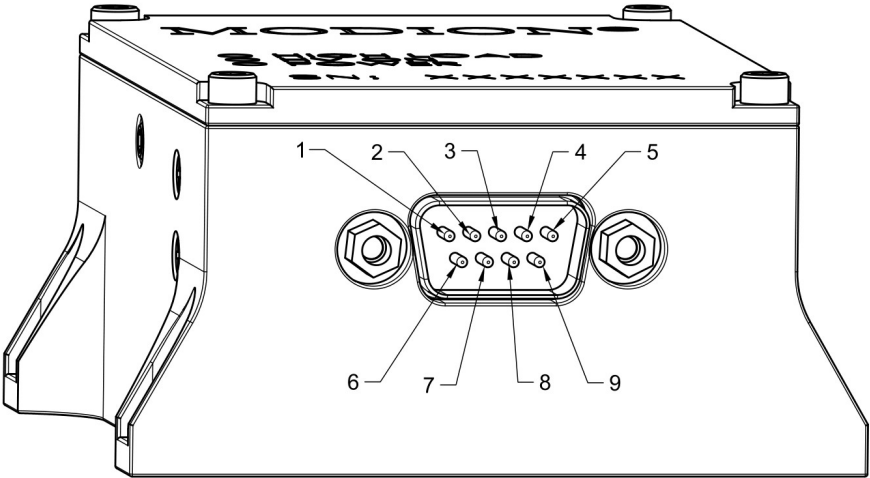


Figure 4
R-1800 HVPS PINOUT



PIN	Function
1	N/C*1
2	Remote High Voltage Enable*2
3	Output current monitor 0-5VDC (Referenced to ground)
4	Remote High Voltage Enable*2
5	N/C*1
6	12VDC(±0.05V) INPUT
7	GND
8	Balanced output current monitor [-] 0-10VDC
9	Balanced output current monitor [+] 0-10VDC

NOTE: *1NO CONNECTION SHOULD BE MADE TO PINS LABELED N/C

*2 IF NOT USING ION PUMP WITH INTEGRAL HV INTERLOCK,
PINS 2&4 MUST BE SHORTED TO ENABLE HIGH VOLTAGE
[DO NOT CONNECT EITHER PIN 2 OR 4 TO GROUND]

THIRD ANGLE PROJECTION

MODION®
www.modionvacuum.com

115 RAILROAD ST.
IRWIN PA, 15642
(724) 523 - 9610

TITLE

HVPS - I/O CONNECTIONS

PART NO

R-1800

Warranty Information

MODION® Inc. warrants all commercial MODION® and HVPS systems to be free from defects in materials and workmanship for a period of twelve (12) months from date of shipment to customer when used in accordance with the accompanying instructions. All obligations of MODION® Inc. under this warranty shall cease in the event of abuse, alteration, misuse, improper installation or neglect of equipment. Reasonable care must be used to avoid hazards. MODION® Inc. expressly disclaims responsibility for loss or damage caused by use of the MODION® or HVPS other than in accordance with proper operating procedures and conditions.

MODION® Inc.'s obligation under this warranty is limited to repair or replacement of the MODION® or HVPS, at MODION® Inc.'s option. In no event shall MODION® Inc. be liable for any special, indirect, incidental or consequential damages.

MODION® Inc. makes no warranty of merchantability or fitness for any purpose, and no other warranty, oral or written, express or implied, except as specifically set forth in this limited warranty. No MODION® Inc. representative or distributor has any authority of power to alter or extend this limited warranty.

If the customer believes that a defect covered by this limited warranty exists, the customer must return the MODION® or HVPS to MODION® Inc., postage prepaid, along with a description of the problem and proof of purchase, and contact information.